

Jerrong Paling Yards

n e w s l e t t e r



Written & published by volunteer members of Jerrong Paling Yards Rural Fire Service as a service to the community

December Volume 1, Number1

Welcome.....

We hope you get value from this publication. It is the first of a proposed series of quarterly newsletters. Its future depends on YOU. If you find things you like, tell us. If there are things you do not like, if you disagree with the views expressed, also tell us. Only in this way will we be able to accurately reflect a range of community attitudes. We do not aim to be “politically correct” and many of the topics will be controversial, some will offend because they challenge well-held concepts and methods. To us, this does not matter, as long as it helps to generate positive change that protects our lands, stock, property, wildlife and way of life. This is a forum for news, events information, contacts, practical advice as well as the “lighter” side of the business of managing fires, for the protection and safety of all.

This season has already been identified as one of the worst in living memory. By the time this newsletter is published, we can only hope that cooler less hazardous conditions prevail. However, it is never too late to take positive action to protect your property and that of others, so PLEASE take action NOW by reading and implementing the advice in the checklist on the following pages.

Profile.....

Alan Maloney



Alan has always lived in the district and has a wealth of local knowledge. This coupled with his firefighting and fire defence skills makes him a great asset both to the brigade and the community. Alan was elected to the captain's position in 2000. Prior to the captaincy he had held the position of deputy since 1978 and had been senior deputy from 1988 to 2000.

Alan holds the following RFS accredited certificates: BF; Advanced BF, Structural Firefighting; Dangerous Chemicals; Chainsaw, Heavy Tanker operation; Foam and Fire extinguisher and LPG firefighting and Crew Leaders Course.

As the Brigade's Equipment Officer he maintains equipment as required and keeps a permanent and upgraded equipment register. In addition, new rules and requirements of the NSW RFS necessitate increasing paperwork and attendant office work. He has ongoing liaison with other brigades and emergency services including attendance at motor vehicle accidents in the district. In all his voluntary work for the brigade he is ably assisted and supported by Sonya and older son Russell.

Advertisers

Our thanks to Waratah Fencing Products – a division of OneSteel. Their management gave instantaneous support to our request for a donation of product – see back page for details. Please demonstrate your thanks by specifying and purchasing from Sargent's Rural Supplies, 183 Oberon Street, Oberon. Wayne Sargent is a preferred stockist of the full range and can help you with all your Waratah fencing requirements.

If you would like to get your business message to our readers, contact Alan Loveard at merchandising_partners@bigpond.com

Practical advice for summer



This picture illustrates what we should NOT be doing!

Our media is full of pictures and stories of desperate people who have lost homes and possessions, sometimes even about the men and women who risk everything by fighting fires. But – we do not want these people fighting fires. If we can help to educate, inform, please or threaten the fools whose actions cause fires in the first place, there would be much more emphasis on prevention and less on rearguard action. Getting through this summer is our first challenge and the following checklist has been adapted from the RFS and slightly modified (*italics*) to suit available copy-space.

Prepare your property NOW!

Is your property prepared against bush fires and grass fires?

- Clear ground fuels around the house (dry grass, dead leaves, branches, undergrowth).
- Reduce Fire Fuels - Take a trip to the tip / *secure combustibles away from buildings.*
- Reduce fire-promoting plants (e.g. eucalypts) close to buildings and access routes.*
- Clear gutters.
- Ember-proof house and sheds.
- Join the Static Water Supply (SWS) program (*remember you are required to have dedicated water supply for fire protection which must not be used for other purposes*).
- Ensure roofing is firmly fixed.
- Prepare and maintain firebreaks. Keep pasture / *scrub* / *weed* growth down. *Serrated tussock is particularly fire-promoting.*
- Install screens or shutters and enclose underfloor areas if possible.
- Screen vents into the roof space with fine wire mesh.
- Remove flammable items from around the house (eg. door mats, woodpile, paper, boxes, crates, hanging baskets, wooden furniture etc).
- Vent LPG gas tanks away from the house *and ensure that any highly -combustible / explosive fuels, gases, paint and other chemicals are stored and marked for identification in an emergency situation.*
- Compile emergency phone list and leave near phone.
- Ensure you have RFS locks on access route closures (gates, bush fences etc.) – call Alan Maloney on 0248 433 078 for more details*

Other things to consider:

- Check water, taps and hoses. Ensure that hoses have metal fittings and are long enough to reach all sides of house when attached to taps. Use heavy duty hoses with wide-spray nozzles, if possible.
- Provide reserve water supplies from tank, dam, or swimming pool, if possible, since mains water will be in high demand. Try to store water during winter months.
- Have gate valve fitted to water tank (a 38mm Storz coupling will assist the Rural Fire Brigade). Have gate valve to fit portable pump as well.
- Regularly check petrol or diesel portable pump, to ensure it starts easily.
- Install a sprinkler system in your garden and on roofing.
- Gather buckets (preferably metal), mops, spray backpack units, ladders, rakes/McLeod Tools and shovels in one place for ready access during a fire.
- Obtain a battery operated radio (we use UHF Channel 18 for local fireground communication)
- Have torches handy in case of electricity failure.
- Secure any highly flammable / explosive materials – vehicle fuel, oxy/acetylene, LPG, paints and solvents and other chemicals and keep them as far as possible from buildings. Placard the existence of such material.

Evacuation

Plan for the safety of all family members: especially for young children, elderly persons, disabled persons and those unable to handle the trauma of bush fire.

If you plan to evacuate (re-locate)

If you intend to evacuate (re-locate) any members of the family, plan well ahead of time where to stay, how to make the decision to leave, and how to travel (remember, leave well before the fire front arrives). *Remember, if you have pets that will need to be moved, to have them ready to travel well ahead of time.*

If you intend to stay

For those who remain, ensure each person has suitable clothing, including sturdy leather footwear, long pants and a long sleeved shirt or jumper (pure wool or cotton offers the best protection from sparks and embers – *acrylics may cause savage burning*), *safety helmet or at least a broad brimmed hat, goggles for eye protection, leather gloves, dust masks or at least handkerchiefs to tie over nose and mouth, wet towels to drape over neck, and bottles for drinking water. Secure pets for their own and your safety.*



Copyright Digital Vision Ltd Amazing Creatures

It is considered anti-social to leave domestic pets to roam free when fire approaches.

What to do when fire approaches

- Listen to the radio for news of the fire's progress, rather than calling emergency services for information. *If you are concerned about your situation or wish to report a new emergency situation emerging which may be unknown to fireground personnel e.g. a nearby spot-over, call the Fire Control Office on 026 336 0493.*
- Organise and pre-pack.
- Dress in protective clothing, drink water frequently.
- Wet-down roof, house and garden, especially on the side of the approaching fire. Turn on sprinkler system, if you have one, but only if you have sufficient water reserves to also allow firefighting to be effectively undertaken.
- Stop downpipes and fill gutters with water.
- Fill baths, sinks and buckets with water for extinguishing small fires and for drinking.
- Bring in hoses so they don't get burnt *and coil them ready for immediate use.*
- As the fire approaches, go inside and remain inside until the fire has passed.
- Place wet towels and blankets against gaps under doors and windows.
- Close heavy curtains, and shutters, if you have them.
- After the fire has passed and for several hours after the fire front has passed, patrol your property and put out spot fires started by flying embers.
- Check roof cavity frequently for spot fires.
- Be especially careful of falling limbs – eucalyptus trees are notorious for dropping large limbs without warning. Do not attempt to chainsaw large burning trees, they are not called widowmakers for nothing. If you cannot "black-out" your property, advise Alan Maloney (0248 433 078) or the Fire Control Office (026 336 0493).*

For more information contact your local Fire Control Centre, your local Fire Brigade, or phone the NSW RFS Information Line (1 800 654 443).

Attribution Note: Above Material reproduced with permission of the NSW RFS from the NSW RFS WebSite: www.rfs.nsw.gov.au; additions *in italics* by Richard Llewellyn and minor editing by Alan Loveard have not been authorised by the NSW RFS

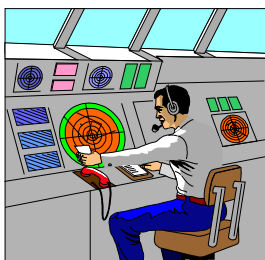
Equipment news

Jerrong Paling Yards has a new Mitsubishi Canter Category 7 truck, a single cabin (crew of 3), 4x4 1300 litre Multi Purpose Tanker. Cat.7 vehicles are designated as Light Fire Appliances, and their role is primarily as a quick-response, first-strike / black-out vehicle; however when things get difficult the Cat.7's are all up there on the line alongside their Cat.1 bigger brothers. The Cat.7 4x4's are considerably more agile than the Cat.1s and therefore they are usually the appliance of choice in difficult territory.

Our Canter has already seen active service at Bindook and was dispatched to help with the fire situation on the north coast of NSW where it spent a short time working on the fireground before being sent back. It is currently only carrying basic equipment as delivered but it is planned to add equipment as this becomes available to us.

All JPY RFS vehicles have been serviced in readiness for this fire season.

The “lighter” side



*“Look Mate,
I only work here”*

When city folk visit “the bush” it may be helpful to provide tips about Australian country etiquette:

1. When decanting wine, make sure that you tilt the paper cup, and pour slowly so as not to “bruise” the fruit of the vine.
2. If drinking directly from the bottle, always hold it with your fingers covering the label.

If you think we are a rough lot, consider this real example of signs seen in hotels overseas!

Cocktail lounge, Norway:

LADIES ARE REQUESTED NOT TO HAVE CHILDREN IN THE BAR.

Local contacts

Captain & Equipment Officer	Alan Maloney	0248 433 078 RMB 449 Mt. Defiance, Oberon Road via Taralga 2580
Senior Deputy Captain	Richard Bell	0248 433 014 Paling Yards via Taralga 2580
Deputy Captains	Mario Sormani Tony Sormani	0248 433 055 RMB 431 Gowrie, Jerrong Road via Taralga 2580
Treasurer	Ken Maloney	0248 433 059 RMB 449 'Hilltop', Oberon Road via Taralga 2580
Secretary	Shirley McKenzie	02 9997 4181 P.O. Box 480, Newport Beach 2106 0248 433 087 'Kintail', Glen Road Jerrong via Taralga 2580
Deputy Equipment Officer	Russell Maloney	0248 433 078 RMB 449 Mt. Defiance, Oberon Road via Taralga 2580
Fire Control Officer	Eddie Gibbons	026 336 0493 P.O. Box 84 Oberon 2787
Marketing & editorial	Alan Loveard	'Uralla' Glen Road, Jerrong via Taralga 2580 0418 230 562 merchandising_partners@bigpond.com

A generous donation from our sponsor



OneSteel Wire (makers of Waratah fencing products) has generously donated 9 rolls of 90X4X1.4 heavily galvanised wire netting valued at \$220 (plus GST) per roll for us to sell to raise funds to cover equipment and publication costs. *The retail value of this gift is around \$2000!*

Please support the JPY RFS by purchasing these products - contact Shirley McKenzie on 02 9997 4181/ 0248 433 08 or Wayne Sargent on 02 633 61 177

And – we hope you will continue to support our sponsor. When the time comes, please contact Wayne Sargent at Sargent’s Rural Supplies, 183 Oberon Street, Oberon, a preferred stockist of Waratah fencing products. Further information regarding OneSteel wire and Waratah products can be found on www.onesteel.com./waratah.

It's amazing what you can do with fencing products. Waratah fencing products are currently being used to safeguard habitats, preserve wetlands, establish windbreaks, minimise erosion and create wildlife corridors.



Landcare Australia - It's the fantastic voluntary efforts of committed individuals right around Australia that have made our landcare movement a model for the world.

OneSteel Wire (makers of Waratah fencing products) is one of Landcare Australia's oldest, most loyal corporate supporters, and is a proud sponsor of Landcare Australia and Greening Australia.



Greening Australia - Greening Australia is a national community based organisation which works with the community to achieve sustainable land management, primarily through improving vegetation management. OneSteel Wire (makers of Waratah fencing products) as a sponsor of Greening Australia Fencing Incentive help in their efforts to achieve sustainable land management through environmentally responsible practices.

Our heroes' stories and their paddock portraits exhibit outstanding role models for livestock production management and effective fencing practice using the range of Waratah fencing products. We cover all categories of livestock ranging from small to large; young and old; fine wool to coarse wool; purebred to outcrossed; studs; ponies to thoroughbred; land care and river care.